

日本信和化工 ULTRON ES-OVM 手性色谱柱

日本信和化工为客户提供优异的色谱分离，具有良好的出峰重现性的色谱柱。信和色谱柱在生产过程中经过严格的质量控制，是高品质 HPLC 色谱柱，独特的性能也深受广大客户欢迎。并有多款色谱柱型号，可以满足不同分析者的分析要求。



ULTRON ES-OVM 手性色谱柱产品介绍:

- 具有广泛的手性识别，手性固定相为不易变性的卵类粘蛋白键合硅胶(US 专利 6027648)。
- 其手性分离是基于疏水相互作用和极性相互作用实现。
- 其符合美国药典 L57，可分析硫酸氢氯吡格雷。
- 具有广泛的手性识别，可用于痕量分析。
- 反相流动相可用水溶液作为流动相，加入少量乙腈或甲醇。

ULTRON ES-OVM 色谱柱规格

色谱柱	粒径(um)	柱尺寸(长度*内径 mm)
ULTRON ES-OVM (narrow bore)	5	150x 2.0
ULTRON ES-OVM (analysis)	5	150x 4.6
ULTRON ES-OVM (analysis)	5	150x 6.0
ULTRON ES-OVM. G (guard column)	5	10x 4.0
ULTRON ES-OVM (analysis)	10	250x 4.6
ULTRON ES-OVM Prep (preparative)	10	250x 20.0
ULTRON ES-OVM Prep. G		
ULTRON ES-OVM Prep. G (guard column for preparative)	10	15x 8.0
ULTRON ES-OVM Guard Cartridge (2pcs./box)	5	5x 2.0
ULTRON ES-OVM Guard Cartridge (2pcs./box)	5	10x 4.6
Holder for Guard Cartridge (with adaptor)		For 5x 2.0mm column
Holder for Guard Cartridge (with adaptor)		For 10x 4.6mm column

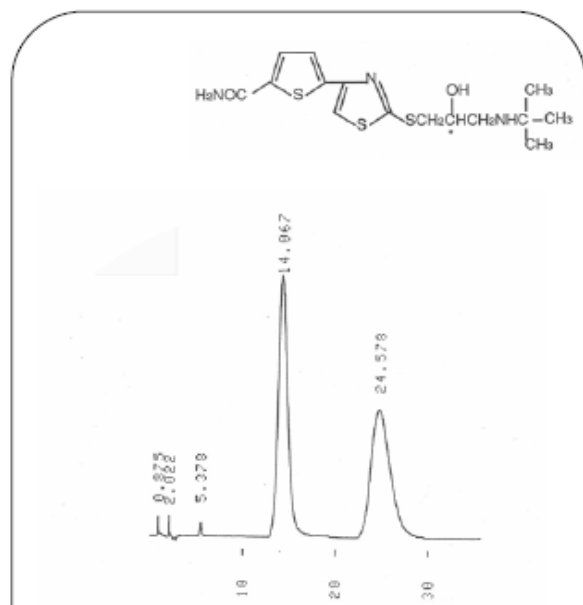
慧德易公司提供 **USP 硫酸氢氯吡格雷**及相关杂质标准品。

Cat No.	Description	Purity Value	CAS No.
1140430	Clopidogrel Bisulfate (125mg)	0.988mg/mg(ai)	120202-66-6
1140586	Clopidogrel Related Compound A (20mg)	1.18mg/mg(ai)	144750-42-5
1140597	Clopidogrel Related Compound B(20mg)	1.10mg/mg(ai)	144750-52-7
1140600	Clopidogrel Related Compound C(20mg)	0.99mg/mg(ai)	120202-71-3

ULTRON ES-OVM

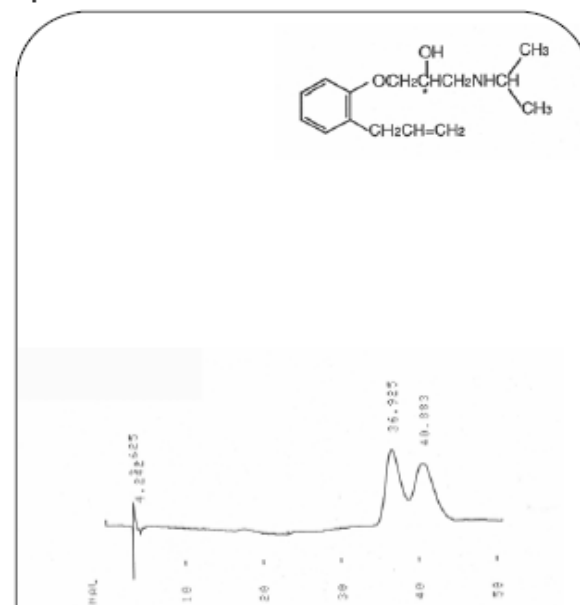
β -blockers

Arotinolol



Column: ULTRON ES-OVM
Size: 150 mm x 4.6 mm I.D.
Mobile Phase: 20 mM KH_2PO_4 (pH 6.0) / CH_3CN = 100 / 5
Flow Rate: 1.0 mL/min
Temperature: 25 °C
Detection: UV-220 nm

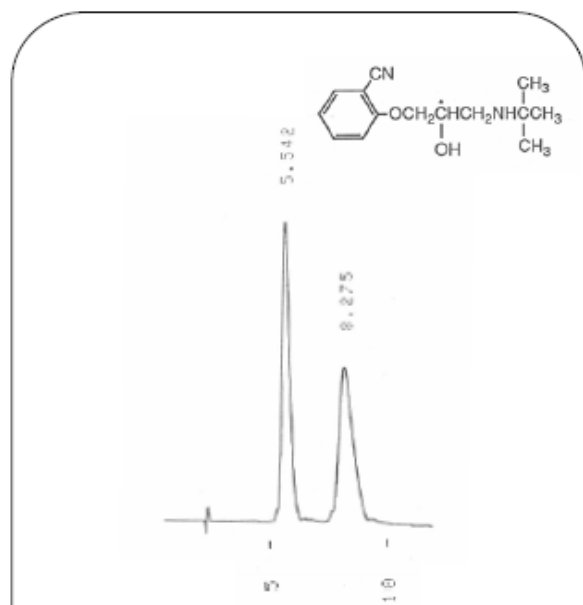
Alprenolol



Column: ULTRON ES-OVM
Size: 150 mm x 6.0 mm I.D.
Mobile Phase: 20 mM KH_2PO_4 (pH 5.5) / CH_3CN = 100 / 10
Flow Rate: 1.0 mL/min
Temperature: 25 °C
Detection: UV-220 nm

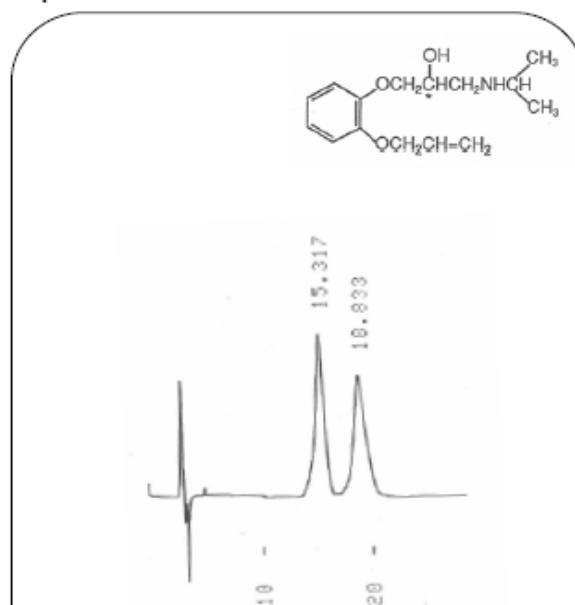
β -blockers

Bunitrolol



Column: ULTRON ES-OVM
Size: 150 mm x 4.6 mm I.D.
Mobile Phase: 20 mM KH_2PO_4 (pH 6.0) / $\text{C}_2\text{H}_5\text{OH}$ = 100 / 3
Flow Rate: 1.0 mL/min
Temperature: 25 °C
Detection: UV-220 nm

Oxprenolol

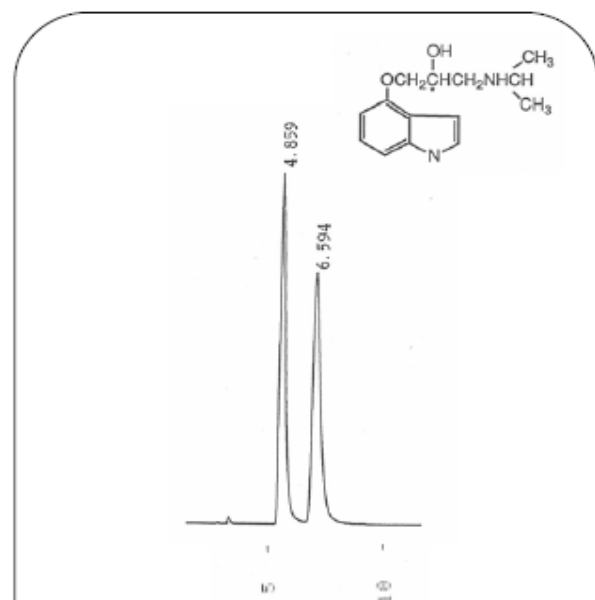


Column: ULTRON ES-OVM
Size: 150 mm x 6.0 mm I.D.
Mobile Phase: 20 mM KH_2PO_4 (pH 6.0) / CH_3CN = 100 / 10
Flow Rate: 1.2 mL/min
Temperature: 25 °C
Detection: UV-220 nm

ULTRON ES-OVM

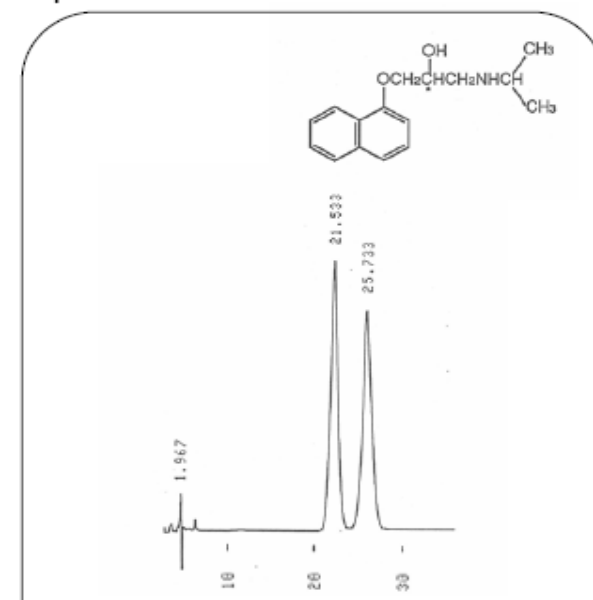
β -blockers

Pindolol



Column: ULTRON ES-OVM
Size: 150 mm x 4.6 mm I.D.
Mobile Phase: 20 mM KH_2PO_4 (pH 5.5) / $\text{C}_2\text{H}_5\text{OH}$ = 100 / 30
Flow Rate: 1.0 mL/min
Temperature: 25 °C
Detection: UV-220 nm

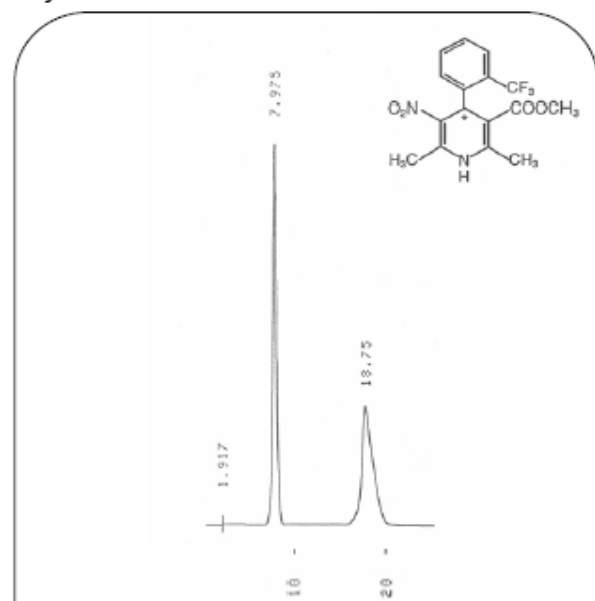
Propranolol



Column: ULTRON ES-OVM
Size: 150 mm x 4.6 mm I.D.
Mobile Phase: 20 mM KH_2PO_4 (pH 6.8) / CH_3CN = 100 / 30
Flow Rate: 1.0 mL/min
Temperature: 25 °C
Detection: UV-220 nm

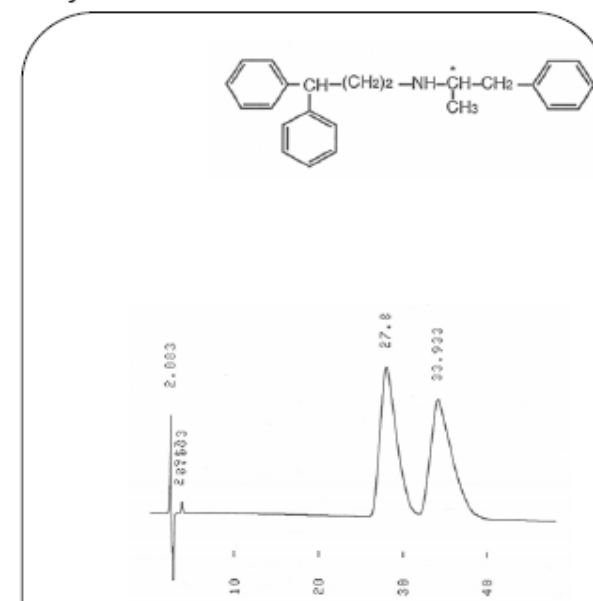
Calcium Antagonists

Bay K 8644



Column: ULTRON ES-OVM
Size: 150 mm x 4.6 mm I.D.
Mobile Phase: 20 mM KH_2PO_4 (pH 4.6) / $\text{C}_2\text{H}_5\text{OH}$ = 100 / 25
Flow Rate: 1.0 mL/min
Temperature: 25 °C
Detection: UV-220 nm

Prenylamine

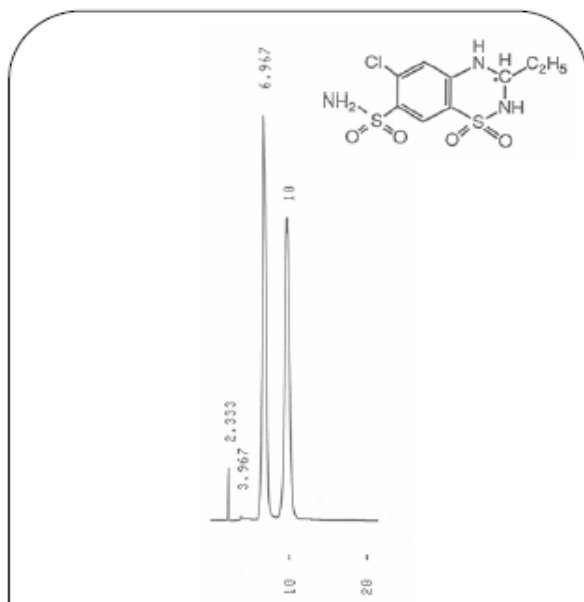


Column: ULTRON ES-OVM
Size: 150 mm x 4.6 mm I.D.
Mobile Phase: 20 mM KH_2PO_4 (pH 5.0) / CH_3CN = 100 / 15
Flow Rate: 1.0 mL/min
Temperature: 25 °C
Detection: UV-220 nm

ULTRON ES-OVM

Diuretics

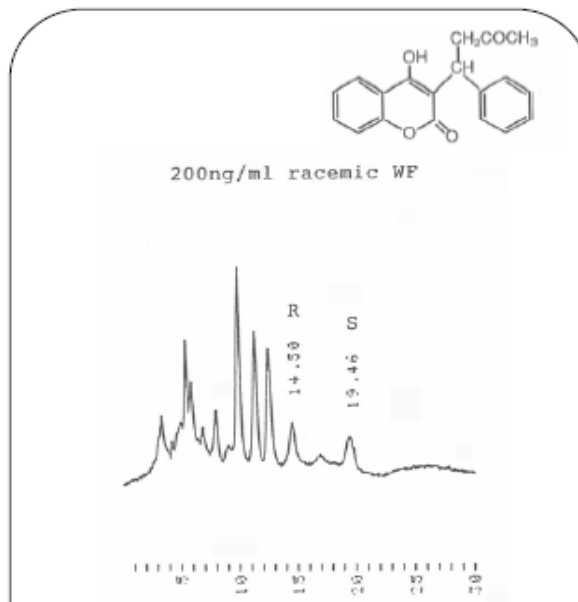
Ethiazide



Column: ULTRON ES-OVM
Size: 150 mm x 4.6 mm I.D.
Mobile Phase: 20 mM KH₂PO₄ (pH 4.6)
Flow Rate: 1.0 mL/min
Temperature: 25 °C
Detection: UV-220 nm

Oral Anticoagulants

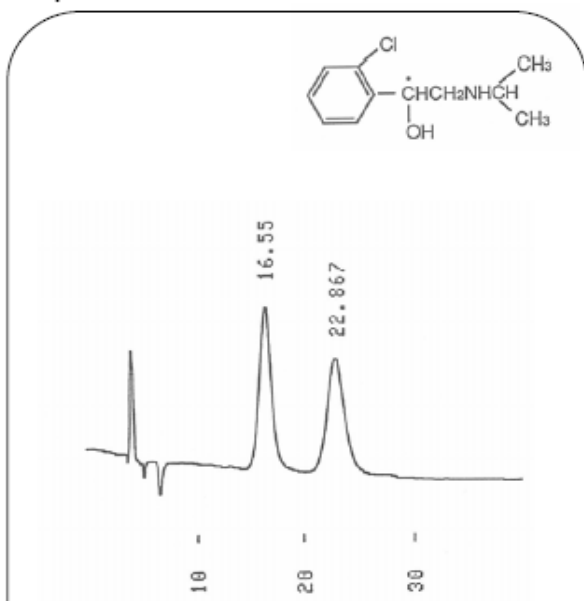
Warfarin



Column: ULTRON ES-OVM
Size: 150 mm x 4.6 mm I.D.
Mobile Phase: 20 mM KH₂PO₄ (pH 3.0) / CH₃CN = 100 / 15
Flow Rate: 0.1 mL/min
Temperature: 25 °C
Detection: UV-305 nm

Bronchodilators

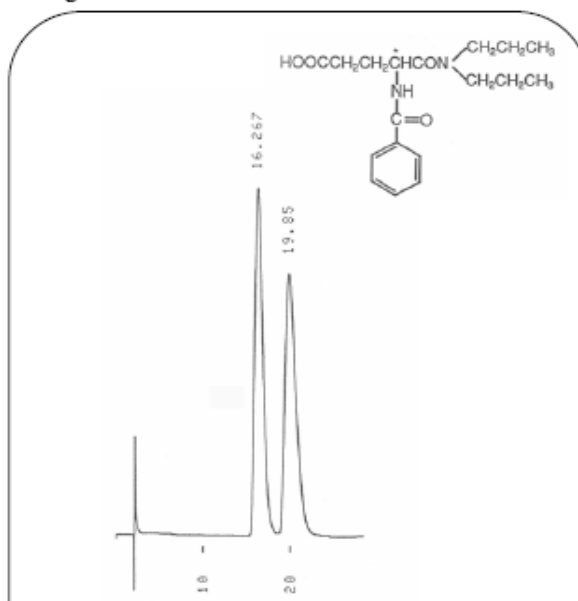
Clorprenaline



Column: ULTRON ES-OVM
Size: 150 mm x 4.6 mm I.D.
Mobile Phase: 20 mM KH₂PO₄ (pH 5.5) / C₂H₅OH = 100 / 3
Flow Rate: 1.0 mL/min
Temperature: 25 °C
Detection: UV-220 nm

Drugs in Peptic Ulcer

Proglumide

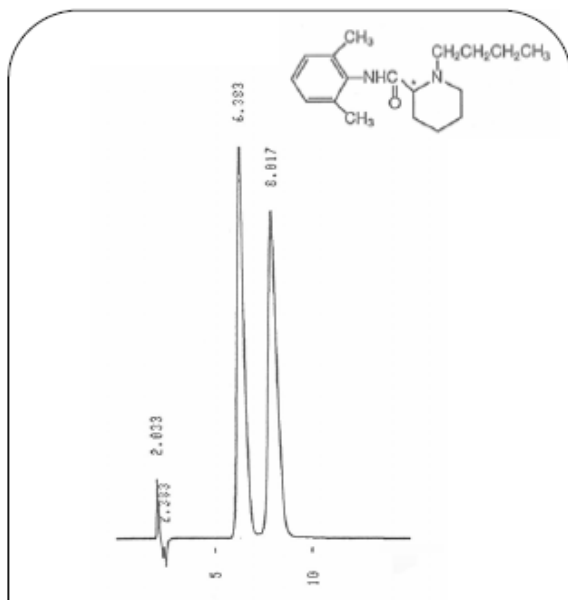


Column: ULTRON ES-OVM
Size: 150 mm x 4.6 mm I.D.
Mobile Phase: 20 mM KH₂PO₄ (pH 4.6) / C₂H₅OH = 100 / 20
Flow Rate: 1.0 mL/min
Temperature: 25 °C
Detection: UV-220 nm

ULTRON ES-OVM

Local Anesthetics

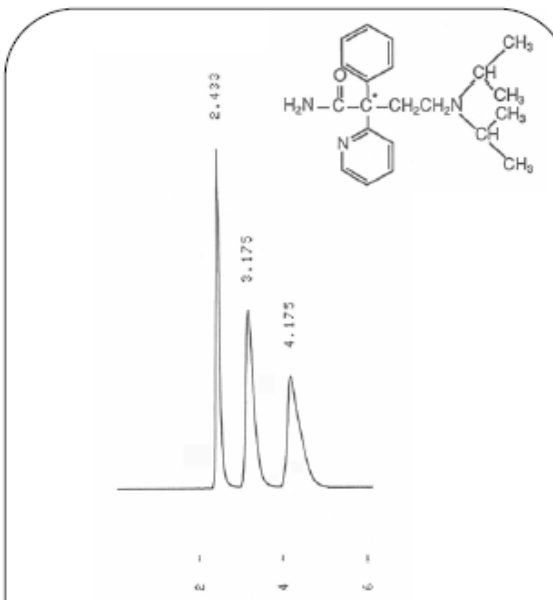
Bupivacaine



Column: ULTRON ES-OVM
Size: 150 mm x 4.6 mm I.D.
Mobile Phase: 20 mM KH_2PO_4 (pH 5.5) / CH_3CN = 100 / 10
Flow Rate: 1.0 mL/min
Temperature: 25 °C
Detection: UV-220 nm

Antidysrhythmics

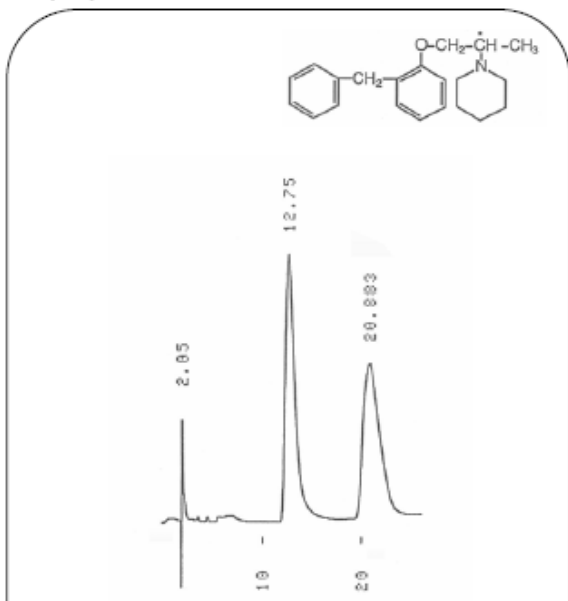
Disopyramid



Column: ULTRON ES-OVM
Size: 150 mm x 4.6 mm I.D.
Mobile Phase: 20 mM KH_2PO_4 (pH 5.5) / $\text{C}_2\text{H}_5\text{OH}$ = 100 / 10
Flow Rate: 1.0 mL/min
Temperature: 25 °C
Detection: UV-220 nm

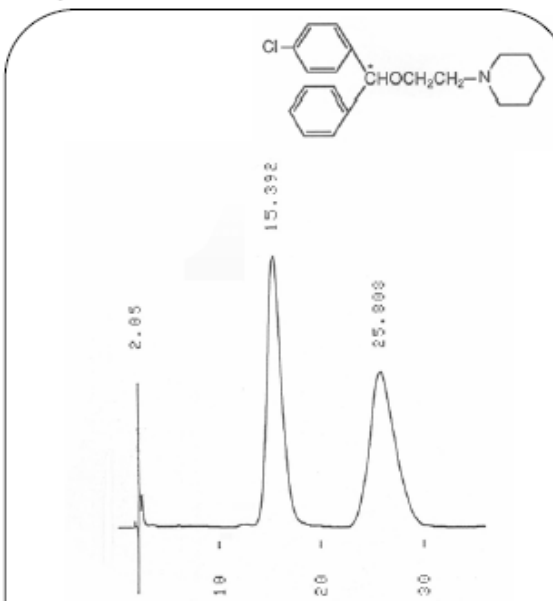
Antitussives

Benproperine



Column: ULTRON ES-OVM
Size: 150 mm x 4.6 mm I.D.
Mobile Phase: 20 mM KH_2PO_4 (pH 4.6) / $\text{C}_2\text{H}_5\text{OH}$ = 100 / 20
Flow Rate: 1.0 mL/min
Temperature: 25 °C
Detection: UV-220 nm

Cloperastin

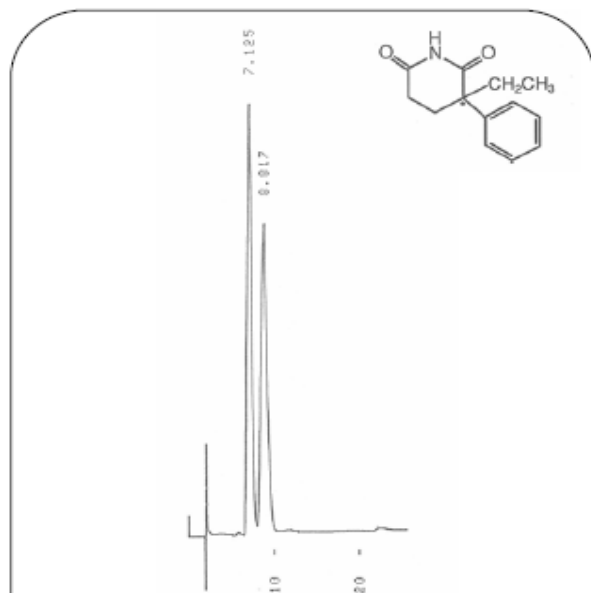


Column: ULTRON ES-OVM
Size: 150 mm x 4.6 mm I.D.
Mobile Phase: 20 mM KH_2PO_4 (pH 4.6) / $\text{C}_2\text{H}_5\text{OH}$ = 100 / 15
Flow Rate: 1.0 mL/min
Temperature: 25 °C
Detection: UV-220 nm

ULTRON ES-OVM

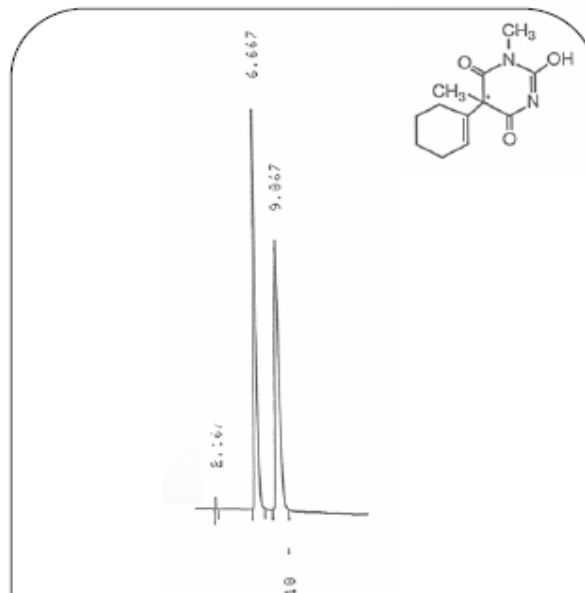
Hypnotics

Glutethimide



Column: ULTRON ES-OVM
Size: 150 mm x 4.6 mm I.D.
Mobile Phase: 20 mM KH_2PO_4 (pH 4.6) / $\text{C}_2\text{H}_5\text{OH}$ = 100 / 10
Flow Rate: 1.0 mL/min
Temperature: 25 °C
Detection: UV-220 nm

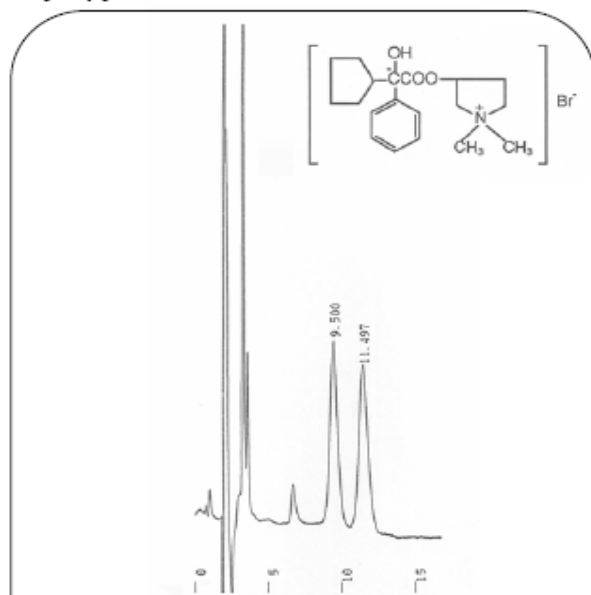
Hexobarbital



Column: ULTRON ES-OVM
Size: 150 mm x 4.6 mm I.D.
Mobile Phase: 20 mM KH_2PO_4 (pH 6.0) / $\text{C}_2\text{H}_5\text{OH}$ = 100 / 5
Flow Rate: 1.0 mL/min
Temperature: 25 °C
Detection: UV-220 nm

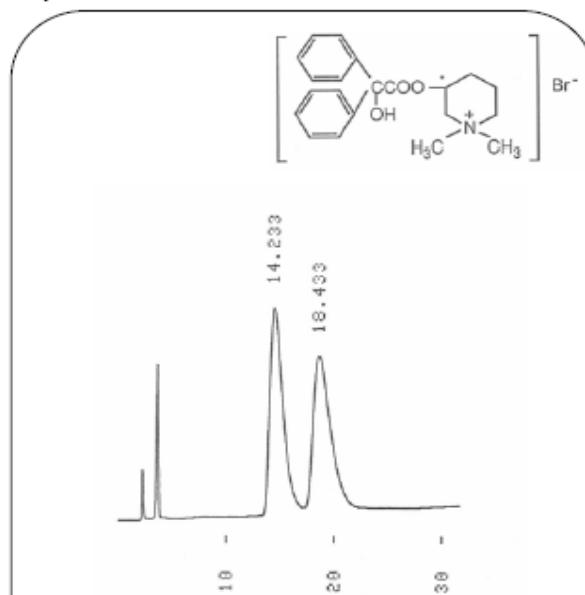
Anticholinergics

Glycopyrronium Bromide



Column: ULTRON ES-OVM
Size: 150 mm x 4.6 mm I.D.
Mobile Phase: 20 mM KH_2PO_4 (pH 5.5) / $\text{C}_2\text{H}_5\text{OH}$ = 100 / 2
Flow Rate: 1.0 mL/min
Temperature: 25 °C
Detection: UV-220 nm

Mepenzolate Bromide

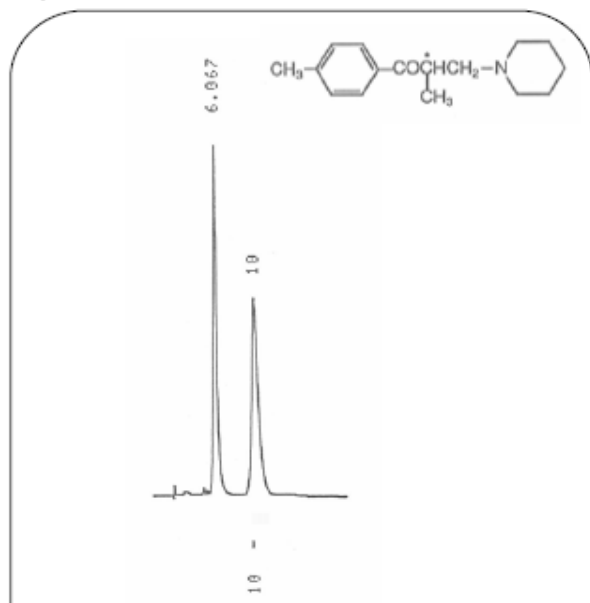


Column: ULTRON ES-OVM
Size: 150 mm x 4.6 mm I.D.
Mobile Phase: 20 mM KH_2PO_4 (pH 4.6)
Flow Rate: 1.0 mL/min
Temperature: 25 °C
Detection: UV-220 nm

ULTRON ES-OVM

Skeletal Muscle Relaxants

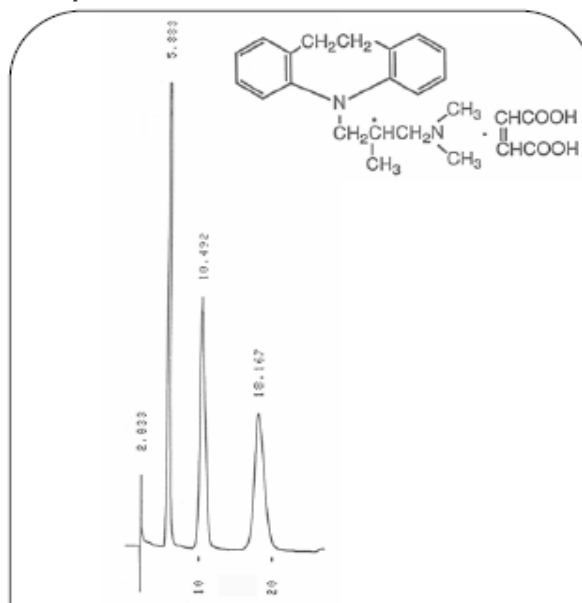
Tolperisone



Column: ULTRON ES-OVM
Size: 150 mm x 4.6 mm I.D.
Mobile Phase: 20 mM KH₂PO₄ (pH 5.5) / C₂H₅OH = 100 / 10
Flow Rate: 1.0 mL/min
Temperature: 25 °C
Detection: UV-220 nm

Antidepressants

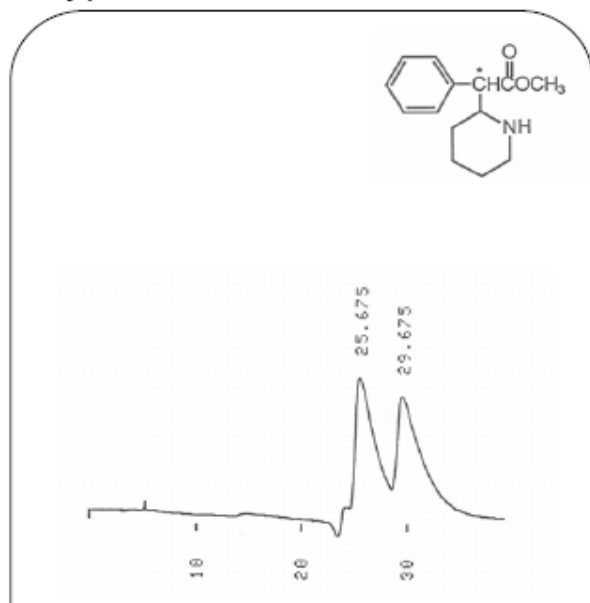
Trimipramine Maleate



Column: ULTRON ES-OVM
Size: 150 mm x 4.6 mm I.D.
Mobile Phase: 20 mM KH₂PO₄ (pH 4.5) / C₂H₅OH = 100 / 30
Flow Rate: 1.0 mL/min
Temperature: 25 °C
Detection: UV-220 nm

Central Nervous System Stimulants

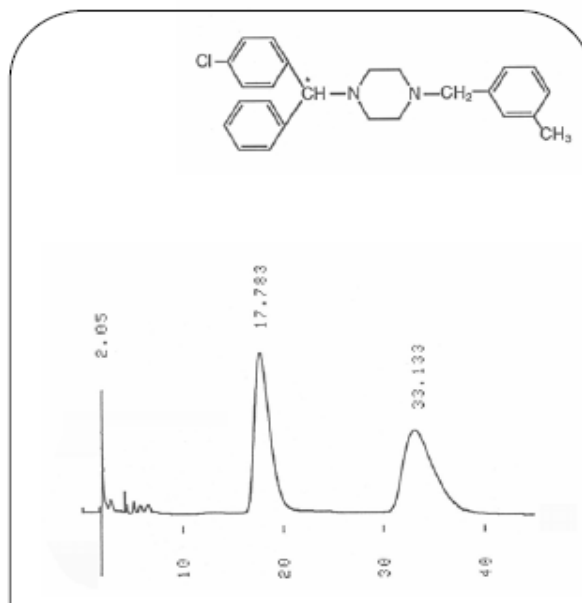
Methylphenidate



Column: ULTRON ES-OVM
Size: 150 mm x 4.6 mm I.D.
Mobile Phase: 20 mM KH₂PO₄ (pH 5.7)
Flow Rate: 1.0 mL/min
Temperature: 25 °C
Detection: UV-220 nm

Drugs Used in Vertigo

Meclizine

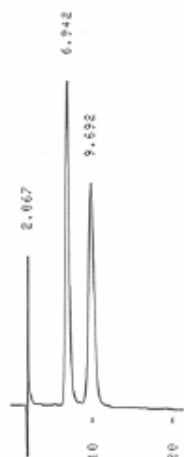
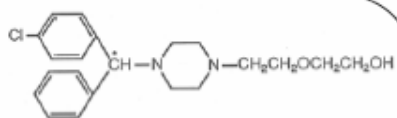


Column: ULTRON ES-OVM
Size: 150 mm x 4.6 mm I.D.
Mobile Phase: 20 mM KH₂PO₄ (pH 4.6) / C₂H₅OH = 100 / 35
Flow Rate: 1.0 mL/min
Temperature: 25 °C
Detection: UV-220 nm

ULTRON ES-OVM

Tranquilizers

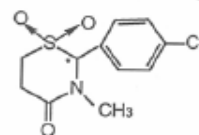
Hydroxyzine



Column: ULTRON ES-OVM
Size: 150 mm x 4.6 mm I.D.
Mobile Phase: 20 mM KH₂PO₄ (pH 4.6) / CH₃CN = 100 / 10
Flow Rate: 1.0 mL/min
Temperature: 25 °C
Detection: UV-220 nm

Skeletal Muscle Relaxants

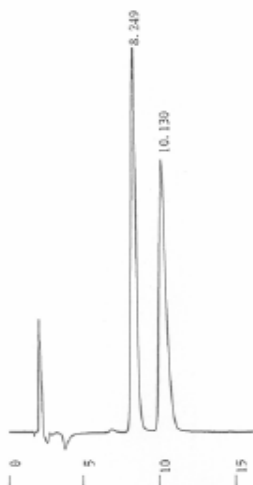
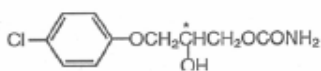
Chlormezanone



Column: ULTRON ES-OVM
Size: 150 mm x 4.6 mm I.D.
Mobile Phase: 20 mM KH₂PO₄ (pH 4.6) / CH₃CN = 100 / 10
Flow Rate: 1.0 mL/min
Temperature: 25 °C
Detection: UV-220 nm

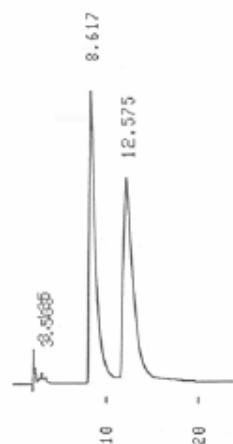
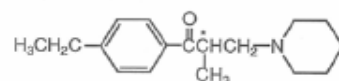
Skeletal Muscle Relaxants

Chlorphenesin



Column: ULTRON ES-OVM
Size: 150 mm x 4.6 mm I.D.
Mobile Phase: 20 mM KH₂PO₄ (pH 5.5)
Flow Rate: 1.0 mL/min
Temperature: 25 °C
Detection: UV-220 nm

Eperisone

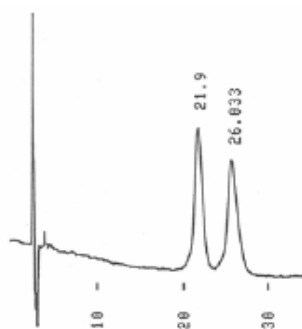
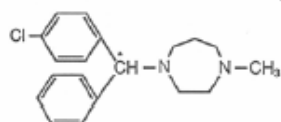


Column: ULTRON ES-OVM
Size: 150 mm x 4.6 mm I.D.
Mobile Phase: 20 mM KH₂PO₄ (pH 5.5) / C₂H₅OH = 100 / 5
Flow Rate: 1.0 mL/min
Temperature: 25 °C
Detection: UV-220 nm

ULTRON ES-OVM

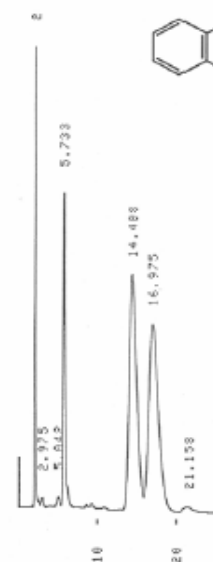
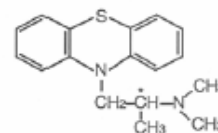
Antihistamines

Homochlorcyclizine



Column: ULTRON ES-OVM
Size: 150 mm x 6.0 mm I.D.
Mobile Phase: 20 mM KH_2PO_4 (pH 4.6) / $\text{C}_2\text{H}_5\text{OH}$ = 100 / 20
Flow Rate: 1.2 mL/min
Temperature: 25 °C
Detection: UV-220 nm

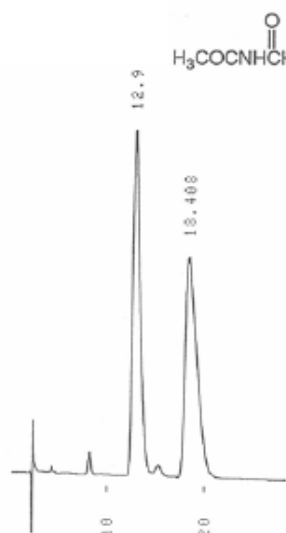
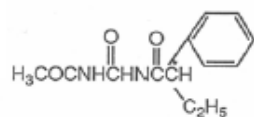
Promethazine



Column: ULTRON ES-OVM
Size: 150 mm x 4.6 mm I.D.
Mobile Phase: 20 mM KH_2PO_4 (pH 3.0) / CH_3CN = 100 / 5
Flow Rate: 1.0 mL/min
Temperature: 25 °C
Detection: UV-220 nm

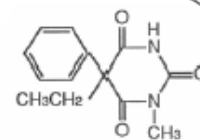
Anticonvulsants

Acetylpheneturide



Column: ULTRON ES-OVM
Size: 150 mm x 4.6 mm I.D.
Mobile Phase: 20 mM KH_2PO_4 (pH 4.6) / $\text{C}_2\text{H}_5\text{OH}$ = 100 / 7.5
Flow Rate: 1.0 mL/min
Temperature: 25 °C
Detection: UV-220 nm

Mephobarbital

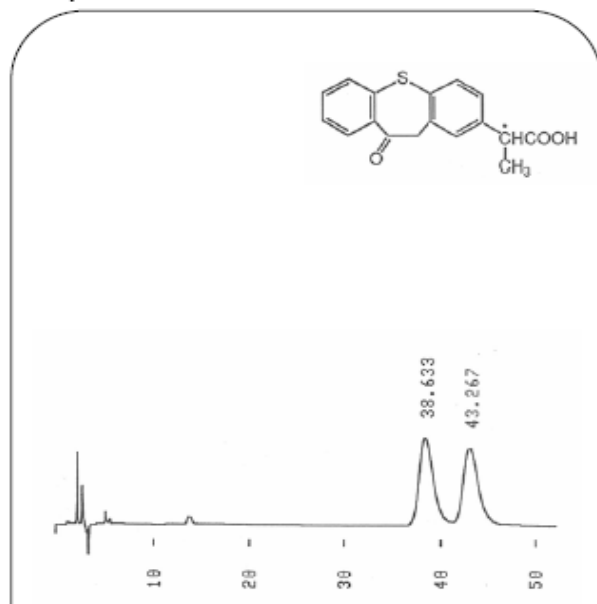


Column: ULTRON ES-OVM
Size: 150 mm x 4.6 mm I.D.
Mobile Phase: 20 mM KH_2PO_4 (pH 4.6) / $\text{C}_2\text{H}_5\text{OH}$ = 100 / 10
Flow Rate: 1.0 mL/min
Temperature: 25 °C
Detection: UV-220 nm

ULTRON ES-OVM

Antiinflammatories

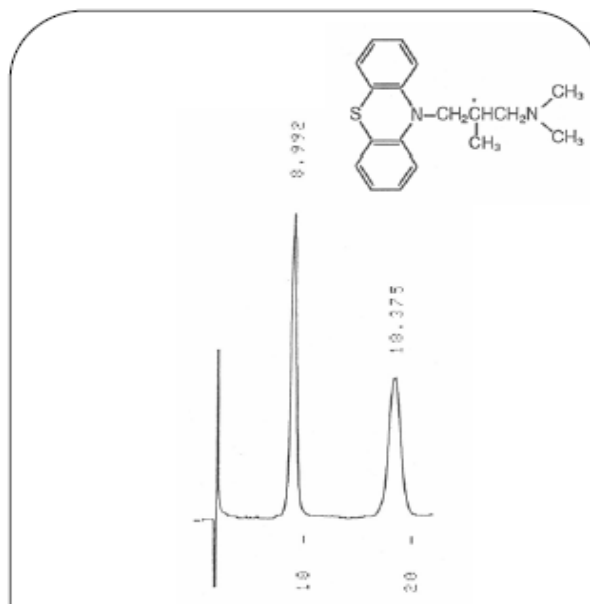
Zaltoprofen



Column: ULTRON ES-OVM
Size: 150 mm x 6.0 mm I.D.
Mobile Phase: 20 mM KH₂PO₄ (pH 3.0) / CH₃CN = 87 / 13
Flow Rate: 1.2 mL/min
Temperature: 25 °C
Detection: UV-220 nm

Antihistamines

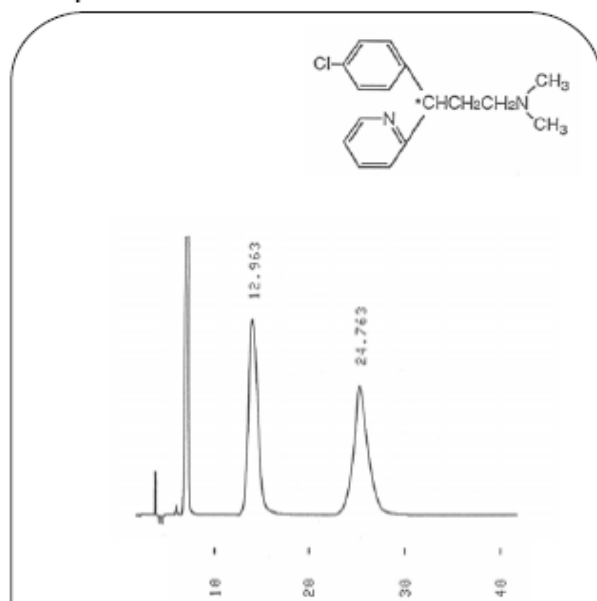
Alimemazine



Column: ULTRON ES-OVM
Size: 150 mm x 4.6 mm I.D.
Mobile Phase: 20 mM KH₂PO₄ (pH 4.6) / C₂H₅OH = 100 / 25
Flow Rate: 1.0 mL/min
Temperature: 25 °C
Detection: UV-220 nm

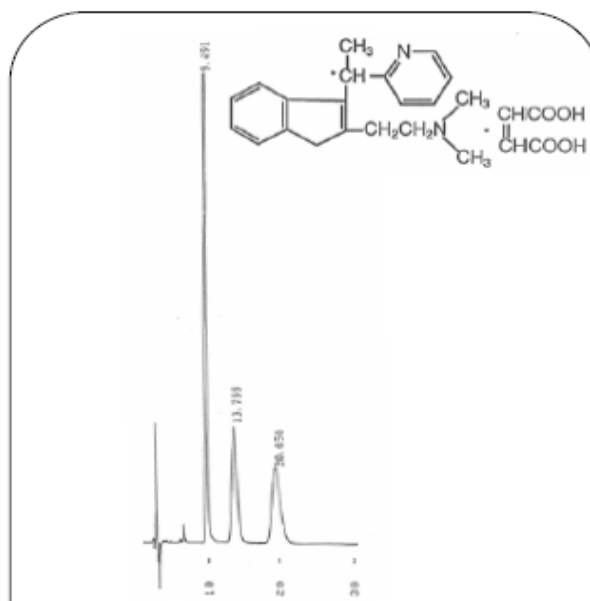
Antihistamines

Chlorpheniramine



Column: ULTRON ES-OVM
Size: 150 mm x 4.6 mm I.D.
Mobile Phase: 20 mM KH₂PO₄ (pH 5.0) / CH₃CN = 100 / 5
Flow Rate: 1.0 mL/min
Temperature: 25 °C
Detection: UV-220 nm

Dimethindene Maleate

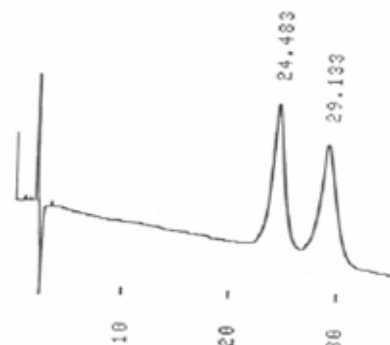
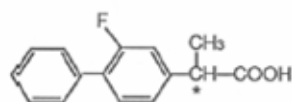


Column: ULTRON ES-OVM
Size: 150 mm x 4.6 mm I.D.
Mobile Phase: 20 mM KH₂PO₄ (pH 4.6) / CH₃CN = 100 / 9
Flow Rate: 1.0 mL/min
Temperature: 25 °C
Detection: UV-220 nm

ULTRON ES-OVM

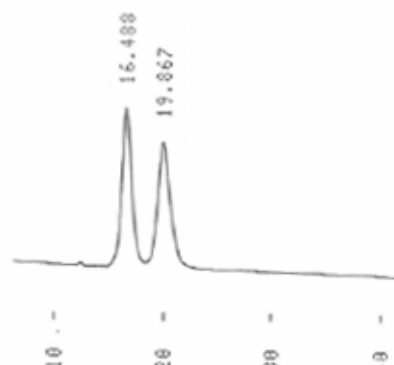
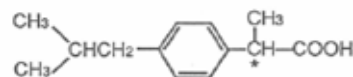
Antiinflammatoryes

Flurbiprofen



Column: ULTRON ES-OVM
Size: 150 mm x 4.6 mm I.D.
Mobile Phase: 20 mM KH₂PO₄ (pH 3.0) / CH₃CN = 100 / 10
Flow Rate: 1.0 mL/min
Temperature: 25 °C
Detection: UV-220 nm

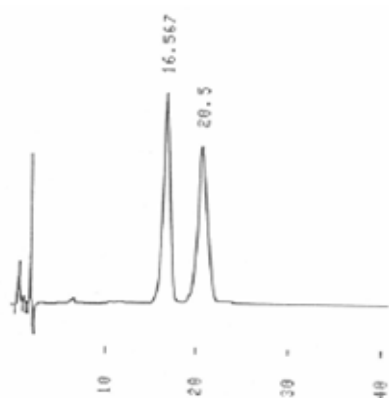
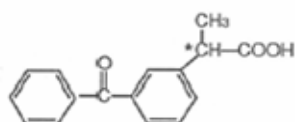
Ibuprofen



Column: ULTRON ES-OVM
Size: 150 mm x 4.6 mm I.D.
Mobile Phase: 20 mM KH₂PO₄ (pH 3.0) / CH₃CN = 100 / 5
Flow Rate: 1.0 mL/min
Temperature: 25 °C
Detection: UV-220 nm

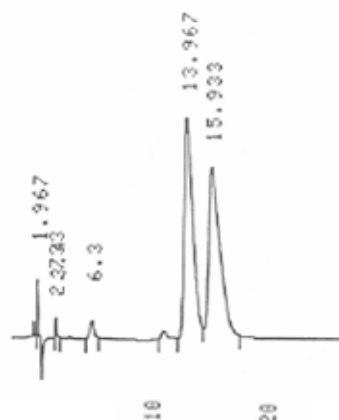
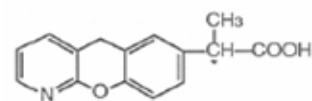
Antiinflammatoryes

Ketoprofen



Column: ULTRON ES-OVM
Size: 150 mm x 4.6 mm I.D.
Mobile Phase: 20 mM KH₂PO₄ (pH 3.0) / CH₃CN = 100 / 10
Flow Rate: 1.0 mL/min
Temperature: 25 °C
Detection: UV-220 nm

Pranoprofen

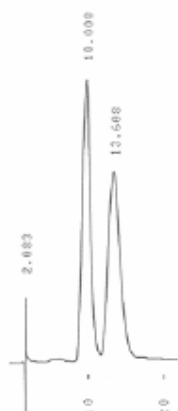
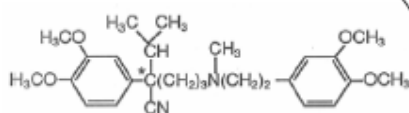


Column: ULTRON ES-OVM
Size: 150 mm x 4.6 mm I.D.
Mobile Phase: 20 mM KH₂PO₄ (pH 3.0) / CH₃CN = 100 / 8
Flow Rate: 1.0 mL/min
Temperature: 25 °C
Detection: UV-220 nm

ULTRON ES-OVM

Calcium Antagonists

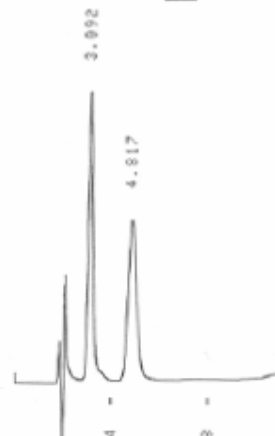
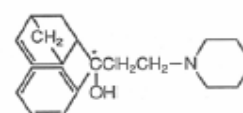
Verapamil



Column: ULTRON ES-OVM
Size: 150 mm x 4.6 mm I.D.
Mobile Phase: 20 mM KH₂PO₄ (pH 4.6) / C₂H₅OH = 100 / 5
Flow Rate: 1.0 mL/min
Temperature: 25 °C
Detection: UV-220 nm

Antiparkinsons

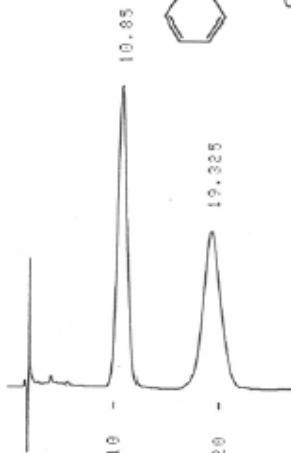
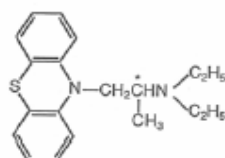
Biperiden



Column: ULTRON ES-OVM
Size: 150 mm x 4.6 mm I.D.
Mobile Phase: 20 mM KH₂PO₄ (pH 4.6) / C₂H₅OH = 100 / 10
Flow Rate: 1.0 mL/min
Temperature: 25 °C
Detection: UV-220 nm

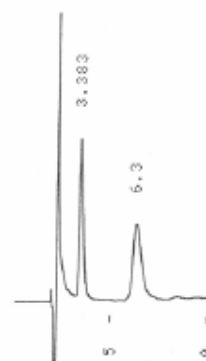
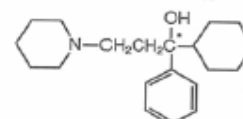
Antiparkinsons

Profenamine



Column: ULTRON ES-OVM
Size: 150 mm x 4.6 mm I.D.
Mobile Phase: 20 mM KH₂PO₄ (pH 4.6) / C₂H₅OH = 100 / 25
Flow Rate: 1.0 mL/min
Temperature: 25 °C
Detection: UV-220 nm

Trihexyphenidyl

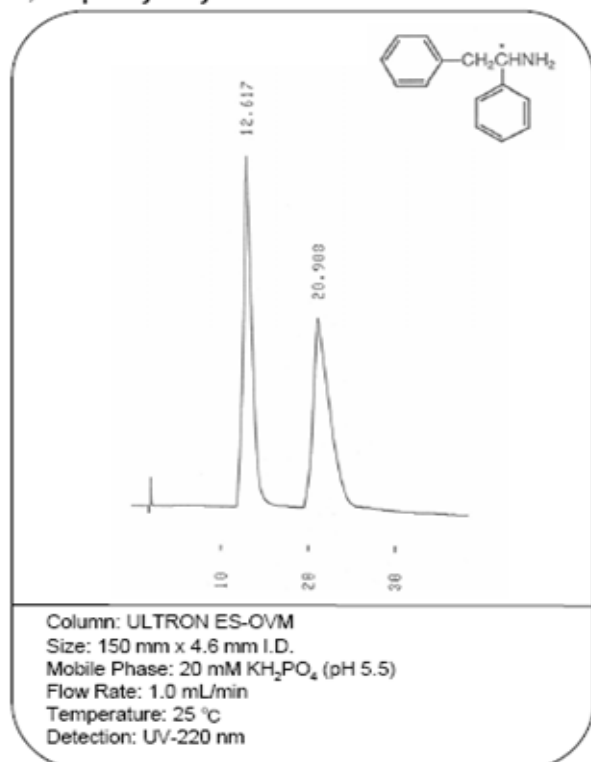


Column: ULTRON ES-OVM
Size: 150 mm x 4.6 mm I.D.
Mobile Phase: 20 mM KH₂PO₄ (pH 4.6) / C₂H₅OH = 100 / 10
Flow Rate: 1.0 mL/min
Temperature: 25 °C
Detection: UV-220 nm

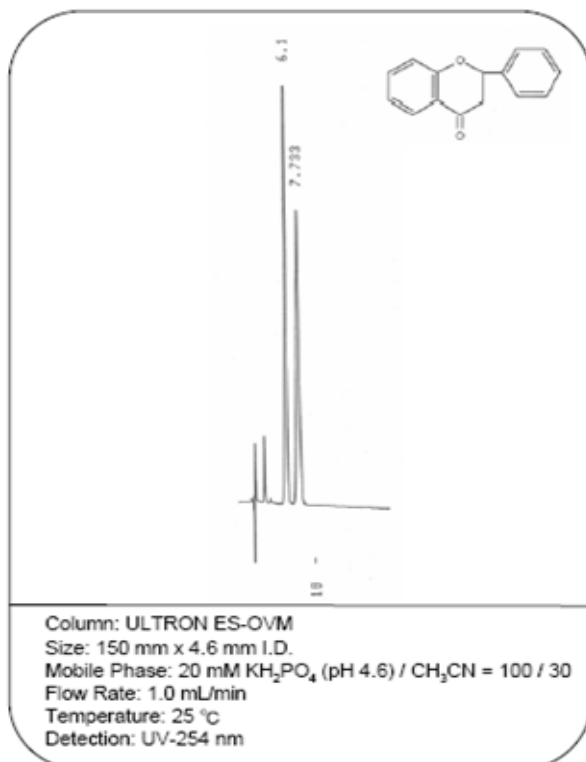
ULTRON ES-OVM

Others

1,2-Diphenylethylamine

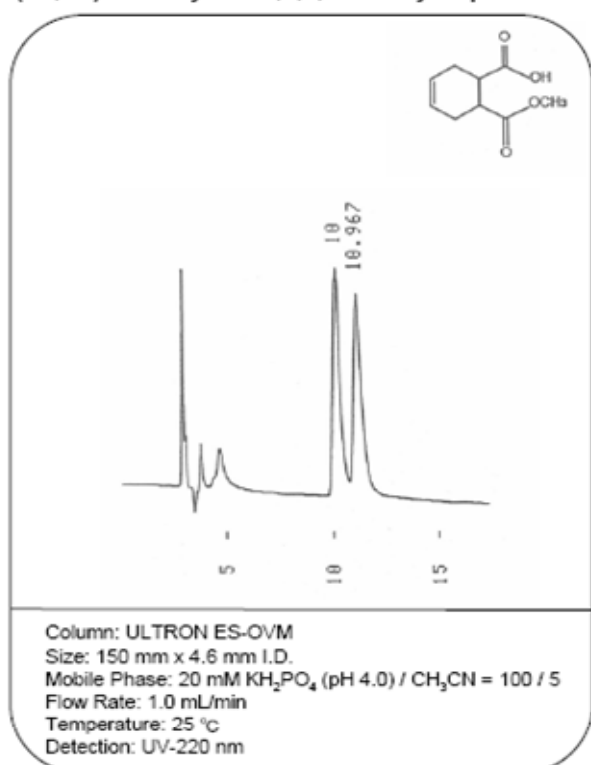


Flavanone

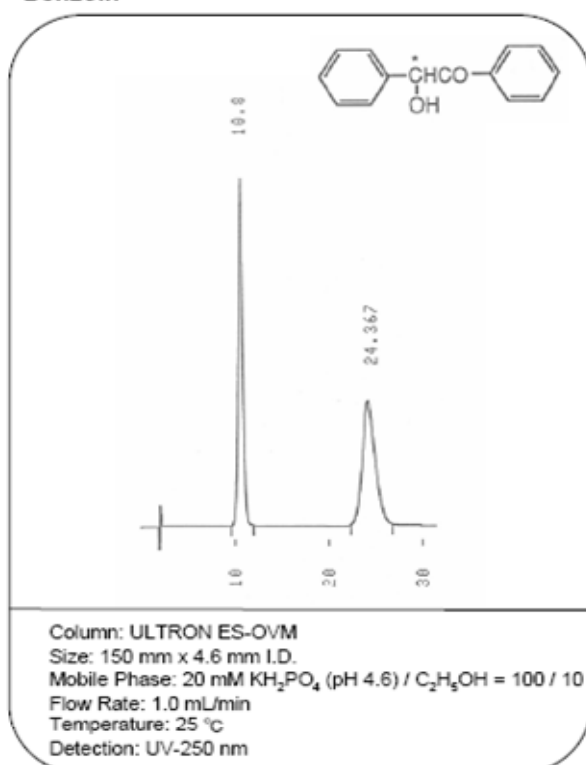


Others

(1S,2R)-1-Methyl-cis-1,2,3,6-tetrahydrophthalate



Benzoin



学 习 园 地

操作指南

- 色谱柱封存在异丙醇：水=1：2 的溶液中。
- 色谱柱标签上标注了流动相的流动方向。
- 最大可耐受的压力为 $1.47 \times 10^7 \text{Pa}$ 。
- 该色谱柱不能在 pH 值小于 3.0 或大于 7.5 条件下使用。
- 最大操作温度为 30℃。
- 该色谱柱可以使用水性缓冲盐体系(磷酸盐等)和普通有机溶剂(甲醇,乙醇,乙腈)。
- 不推荐使用有机相比例大于 10%的流动相。
- 使用时必须过滤流动相和样品溶液。以免流动相和样品溶液中微粒污染色谱柱头塞板和柱头填料。

色谱柱维护

防止污染物和微粒子污染分析柱，推荐在分析时使用保护柱。

使用异丙醇：水=1：2 的溶剂冲洗色谱柱，可以消除污染物，改善峰型。

长期保存：冲洗掉缓冲盐后存储在异丙醇:水=1：2 溶液中，保存温度为 25℃或低于该温度。旋紧柱两端螺塞。

北京总公司：

地址：北京回龙观西大街龙冠大厦 719 室

邮编：102208

热线：(10)-51528296, 51528297, 51528298,

传真：(10)-51528299

邮箱：sales@prep-hplc.com

网站：www.prep-hplc.com

上海办事处：

地址：上海张江益丰路 55 弄春港丽园 67 号 201 室

邮编：201203

电话：021-58950178

传真：021-58950178